

ZOOLOGISCHE MEDEDELINGEN

UITGEGEVEN DOOR HET

RIJKSMUSEUM VAN NATUURLIJKE HISTORIE TE LEIDEN
(MINISTERIE VAN CULTUUR, RECREATIE EX MAATSCHAPPELIJK WERK)

Deel 50 no. 6

25 november 1976

NEW AND RARE MEDITERRANEAN LASPEYRESIINI
COLLECTED BY DR. J. KLIMESCH
(LEPIDOPTERA, TORTRICIDAE)

by

A. DIAKONOFF

Rijksmuseum van Natuurlijke Historie, Leiden, The Netherlands

With 7 text-figures and 4 plates

Dr. J. Klimesch, Linz, Austria, kindly entrusted me with material of Mediterranean Laspeyresiini for identification. Some rare and other, apparently new, species are treated below.

I am grateful to the collector for the opportunity to study this interesting material and for the permission to retain some duplicates for the Leiden Museum collection. The types are in Dr. J. Klimesch Collection.

The figures have been made by Mr. J. Wessendorp and by myself, the printing of photographs, by Mr. Chr. Hoorii.

Pammene (Pammene) macrolepis spec. nov. (pl. 1 fig. 2, pl. 4 fig. 9)

♂ 10.5-12 mm (holotype 11.5 mm). Head creamy white, forehead rough, vertex densely mixed with dark grey, tufts on vertex roughly spreading. Palpus dilated posteriorly, flattened laterally, white, middle of upper edge with a black dot, apical edge of median segment mixed with black, terminal segment short, concealed, white. Antenna dark fuscous, white on upper side in certain lights. Thorax glossy light grey, a subapical creamy transverse band, dilated at the sides, angulate and interrupted in middle, apex creamy white. Abdomen glossy leaden-grey.

Fore wing oblong-subtruncate, dilated, costa almost straight, apex rounded, termen gently concave below apex, rounded below, little oblique. Basal patch to 2/5, edge angulate, ill-defined; pale glossy grey-whitish, rather regularly traversed by dark fuscous-grey, narrow, angulate and interrupted fasciae, causing a rather dense marbling; remainder of wing light fulvous-fuscous with a pale bronze gloss; 3/4 of costa with six pairs of pale transverse marks, two anterior smaller, approximated, ill-defined, distant from others; third

and fourth larger, oblique; fifth and sixth longer, dentoidal, becoming less oblique, white, single; slender leaden-metallic, partly bluish oblique lines from first, third and fourth pair of costal marks, respectively, rather short and ill-defined except last one which is crossing wing to terminal concavity; dorsal patch moderate, excurved, darkly parted throughout, reaching slightly above fold; posterior half of wing pale, sordid vinaceous-whitish in disc, along wing edges deeper fulvous and bronze, all veins in and beyond cell and lower edge of cell narrowly streaked with blackish, also in ocelloid spot; this indicated by thick violet-metallic edges: anterior, broad, slightly inwards-oblique, from vein 6 to 2, forming a conspicuous blotch, preceded anteriorly by three horizontal thick black marks; posterior edge of ocelloid spot narrower, broken in two between veins 3 and 4, upper half outwards-, lower inwards-oblique, both close to termen; two short blackish lines parallel to metallic lines below costa posteriorly, a few black points before posterior edge of ocelloid patch and a black marginal line in apex and along termen to tornus. Cilia glossy submetallic fuscous-leadens.

Hind wing rather light fuscous-bronze, becoming paler and semipelluculent towards base. Cilia pale fuscous with a darker narrow basal band.

Male genitalia. Apparently belonging to those of the sectio *Pammenae* *albuginanae* *insulanae*, but with a single subbasal spine on the left sacculus and with a small angulate ventral subapical prominence of the aedeagus. Valva long and slender, little narrowed, cucullus gradually curved.

Greece, Rhodos Island, Rodini, larva bred from spun leaves of *Quercus macrolepis*, 9.x.1972 (J. Klimesch), 1 ♂, holotype, genit. slide 9167; 4 paratypes, the same locality and food plant, bred 10.x., 22.xi., 19.xii.1972 and 3.i.1974 (J. Klimesch). One paratype (10.x.1972) has a pale ochreous thorax with faint fuscous spots, but is otherwise similar to the holotype.

♀ 10-12 mm. Two old faded and mouldy females, quite similar to the males, one with a white round label: / Har., Austria/ in faded ink, with a later name label: /gallicolana /, must be the sex partners of the above described males (Leiden Museum).

Female genitalia. Resembling those of *P. gallicolana*, but lamella antevaginalis with upper lateral angles more acutely pointed; ostium proper rather similar, but lamella antevaginalis shorter, less narrowed caudad, with sides slightly projecting in middle, but hardly thickened, lower part forming a robust funnel, with lower end emarginate in middle; colliculum, a short sclerotic tube, its upper edge pointed and crowned with hyaline tumescences. Signa shorter than in *gallicolana*.

The species resembles rather *P. gallicolana* Lien. & Zeller but is much lighter, with the anterior half of the fore wing light grey, richly marbled with

whitish, instead of being evenly deep violet grey, faintly suffused with paler grey (as are *gallicolana* and *albuginana*); especially dorsum between base and dorsal patch mostly is strongly striped vertically with whitish (almost evenly grey, in the two above mentioned species); besides, the median fasciate blackish mark on middle of costa is slender and shorter in *macrolepis*, longer and broader in *gallicolana*, almost reaching to the dark anterior edge of ocelloid spot; this dark edge is broken into a row of spots, in the present species and mostly entire, in *gallicollana*.

Pammene (*Pammene*) *percognata* spec. nov. (pl. 1 fig. 1)

♂ 16 mm. Head slaty-grey, touched with fuscous on vertex. Palpus light ashy-grey. Antenna dark fuscous-grey. Thorax dark grey slightly mixed with blackish, tegula grey. Abdomen fuscous-grey.

Fore wing oblong, suboval, costa curved, apex rounded, termen gently sinuate below apex, moderately rounded below, little oblique. Basal patch over 1/3, greyish-black, with a slight anthracite gloss; edge angulate, gently concave above and beneath, angle slightly truncate; posterior 2/3 of wing blackish along costa, deep vinaceous-brownish-fuscous, mixed with black below costa; posterior 2/3 of costa with seven pairs of white marks, tolerably equidistant and rather short, posterior pair wider, thicker and slightly longer, also less oblique; first and second pairs interconnected below costa by a lighter grey suffusion, touching top of dorsal patch; third costal pair of marks continued by a rather faint blue metallic streak running obliquely across wing to top of anterior edge of ocelloid spot; fourth to sixth pairs emitting narrower, convergent blue streaks, parallel to preceding, finally running to top of posterior edge of ocelloid spot; dorsal patch median, large, occupying about 1/4 of dorsum, reaching almost to upper edge of cell, anteriorly connected with grey suffusion below costa; this patch white, with 3-4 vertical dark grey marks and some suffusion on dorsal edge and 1-2 vertical small marks below its top; patch gently inwards-oblique, narrowed above fold (upper third), top slightly projecting again on both sides, truncate, lower half with sides convex; ocelloid spot large, over lower 2/3 of disc, brownish with vinaceous tinge, with some five black linear marks; edges blue-metallic, thick; a distinct round whitish dot in tornus opposite ocelloid spot, two more small, less distinct whitish terminal spots, in subapical concavity and on termen above tornus, respectively. Cilia leaden-grey with a paler base.

Hind wing light grey-bronze, with a vinaceous tinge, dorsum greyish. Cilia rather light, fuscous-grey, basal half bronze, a pale median streak.

Male genitalia. Very similar to those of *P. (P.) querceti* Gozmany, but valva longer and more slender and aedeagus not narrowed in middle and not prominent before apex below, but simply cylindrical.

Macedonia, Treska Schlucht, 4-10.v.1963 (J. Klimesch), 1 ♂, holotype, genit. slide 9443. A moderate, bright coloured species, with a high, slender and large dorsal patch. Superficially slightly resembling *P. (P.) orientana* V. Kuznetsov, but with differently shaped dorsal patch and quite different male genitalia. These resemble slightly those of *P. (P.) querceti* Gozmany, but that species is entirely different as to the colouring and markings, as I was able to state owing to the kindness of Dr. L. Gozmany, who sent me the type series of *querceti* for comparison.

Selania macella spec. nov. (pl. 2 fig. 4, pl. 3 fig. 7)

♂ 8.5 mm. Head, palpus and thorax creamy-white, tip of palpus suffused with pale tawny. Antenna pale grey. Abdomen whitish.

Fore wing oblong, subtruncate, little dilated, costa gently curved, apex obtusely pointed, termen sinuate above, moderately convex below. Creamy, on posterior half suffused with pale ochreous, densely strigulated with narrow fuscous strongly angulate transverse lines, running obliquely from costa to upper edge of cell, vertical in cell, less oblique from lower edge of cell to dorsum; these lines dilated and dark on costa, less dilated and hardly darkened on dorsum, somewhat irregular and appearing double in cell, altogether about eight lines, ultimate along closing vein; on costa these lines alternating with silvery-white pairs of oblique strigulae; posterior half of costa with five larger silvery white marks, anterior one darkly parted, others single, third of these continued across wing to concavity of termen below apex; ocelloid spot large, preceded by a small dark fuscous irrorated band; anterior edge of spot long and thick, silvery-white, zigzagged, to end of dorsum and emitting a horizontal small streak at bottom of ocelloid spot, posterior edge short and small, resting on termen above tornus; a fuscous marginal line in apex and along termen. Cilia (imperfect) concolorous, slightly dusted with fuscous.

Hind wing whitish-ochreous, slightly suffused deeper tawny-ochreous towards apex and along margin, semipellucid. Cilia glossy whitish.

♀ 9.5 mm. Similar, but slightly infuscated throughout, transverse lines more extended and darker, a few horizontal, short, dark fuscous marks in cell. Hind wing darker, fuscous, slightly paler towards base, cilia pale fuscous with a subbasal darker narrow band. Otherwise as male.

Male genitalia. Resembling those of *S. resedana* closely, but valva distinct: oblong and narrow, costa slightly, sacculus more abruptly narrowed before cucullus top, which is curved inwards, but not projecting on costal side, only slightly, on lower side and densely long-spined; disc of valva beyond basal concavity evenly beset with slender equal spines. (In *resedana* cucullus is less recurved, broader than valva which is more constricted before cucullus).

Female genitalia. Rather closely resembling those of *resedana*, but differing by lamella postvaginalis having a small thickened triangle at top, being slightly more constricted; ostium with sides showing a darker, larger edge.

Canary Islands, Gran Canaria Id., Telde, 22-26.x.1957 (R. Pinker), 1 ♂, holotype, genit. slide 9612; the same, Mas Palomas, xii.1958 (R. Pinker), 1 ♀, allotype, genit. slide 9615. An interesting addition to this group of uniform slender species; nearest allied to *S. resedana* Obraztsov, from Italy.

Laspeyresia (Laspeyresia) conicolana (Heylaerts)

Grapholitha conicolana Heylaerts, 1874: 380.

Distribution. England, Netherlands, Germany, southern France, Austria, Poland, Albania, Turkey.

Graccia, Pelop[onnesus], Chelmos, 1400 m, 10.vi.1958. — Kalavryta, 700 m, 3-13.vi.1958 (J. Klimesch), 2 ♂, genit. slide 8610.

Laspeyresia (Laspeyresia) duplicana graeca (Staudinger) (fig. 1)

Grapholitha duplicana Zetterstedt, 1840: 986.

Grapholitha graeca Staudinger, 1871: 225.

Laspeyresia (s. str.) *duplicana graeca*: Danilevski & Kuznetsov, 1968: 527, fig. 387 (♂).

Distribution, of the nominal form, non-deciduous wood zone of Central and Northern Europe; of the subspecies, Pyrean peninsula, Balkans, Asia Minor, Transcaucasus, Kopet-Dagh.

Canary Islands, Tenerife, Guimar, 6.vi.1965 (J. Klimesch), 1 ♀, genit. slide 8604.

Female genitalia nearest to those of *L. (L.) interscindana* Motschulski, as depicted by Danilevski & Kuznetsov, 1968, fig. 391: lamella postvaginalis rather swollen, subquadrate, with a faint median lengthwise depression; lower edge of this lamella truncate and slightly excised in its middle, without a median acute process; colliculum short.

Laspeyresia (Endopisa) plumbiferana (Staudinger) (fig. 3)

Grapholitha plumbiferana Staudinger, 1871: 224, pl. 3 fig. 2.

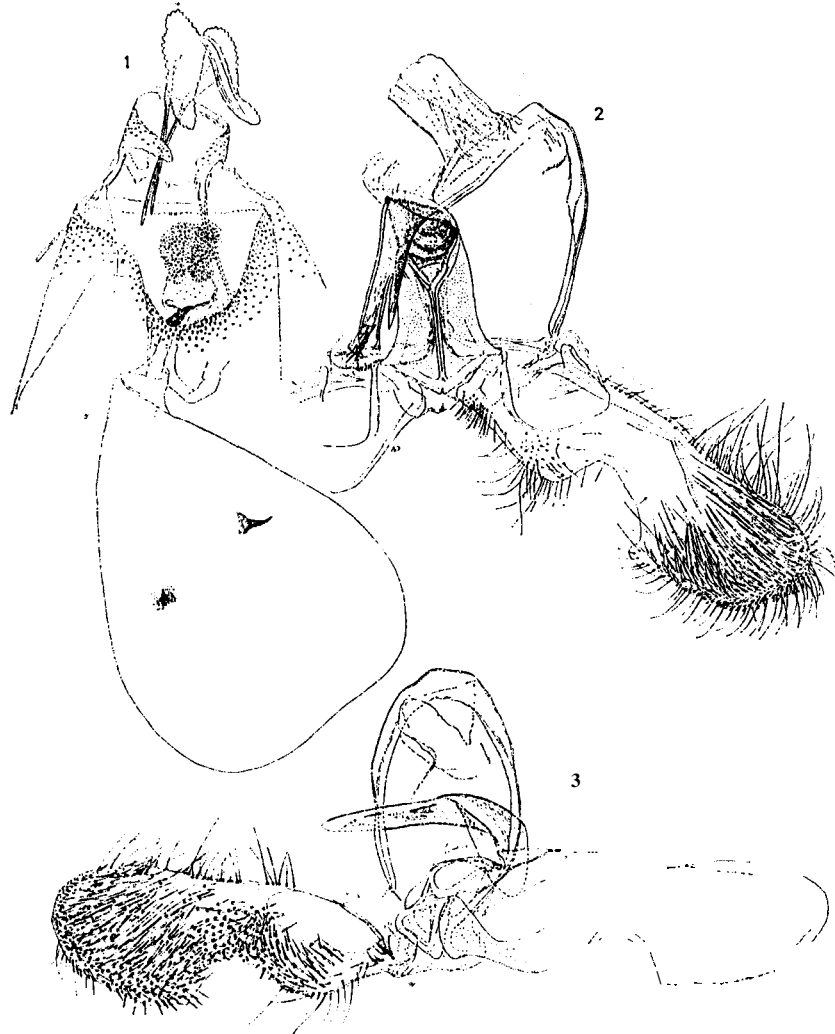
Laspeyresia plumbiferana; Kennel, 1921: 606, pl. 24, fig. 1. — Obraztsov, 1959: 184, 195, fig. 39 (genit. ♀).

Laspeyresia (Endopisa) plumbiferana; Danilevski & Kuznetsov, 1968: 502, fig. 365.

♂ 11 mm, metallotype. In all details converging with the description of the female holotype by Danilevski & Kuznetsov, and with the elegant coloured picture by Kennel. The only particular omitted from the description is the curved brightly shining silvery-lead streak connecting ultimate white costal mark with subapical light mark on termen, thus separating apical black pale-centred spot. Cilia of the fore wing light grey, mixed with jet-black

scales, extending the whole length of cilia. Abdomen dark blackish-fuscous, anal tuft fuscous.

Male genitalia. Valva rather broad, ventral edge with a semicircular excision slightly before the middle, hardly reaching to middle of breadth of valva. Surface of sacculus from beyond base to below top covered with



Figs. 1-3. Genitalia of Mediterranean *Laspeyresia* species. 1, *L. (L.) duplicana graeca* (Staudinger), ♀, genit. slide 860.1; 2, *L. (Endopisa) sumptuosana* (Rebel), ♂, holotype; 3, *L. (E.) plumbiferana* (Staudinger), ♂, metalotype.

moderately dense small bristles, this area turning into a denser group of thicker bristles, covering almost entirely ventral 2/3 of the basal part of cucullus as far as the usual cucullus bristles, except the extreme ventral edge; top of cucullus densely bristled all over; ventral edge of cucullus very short, hardly traceable. Aedeagus pistol-shaped, with one stout and some five smaller cornuti of diverse size.

Distribution. Greece. ?The South of France.

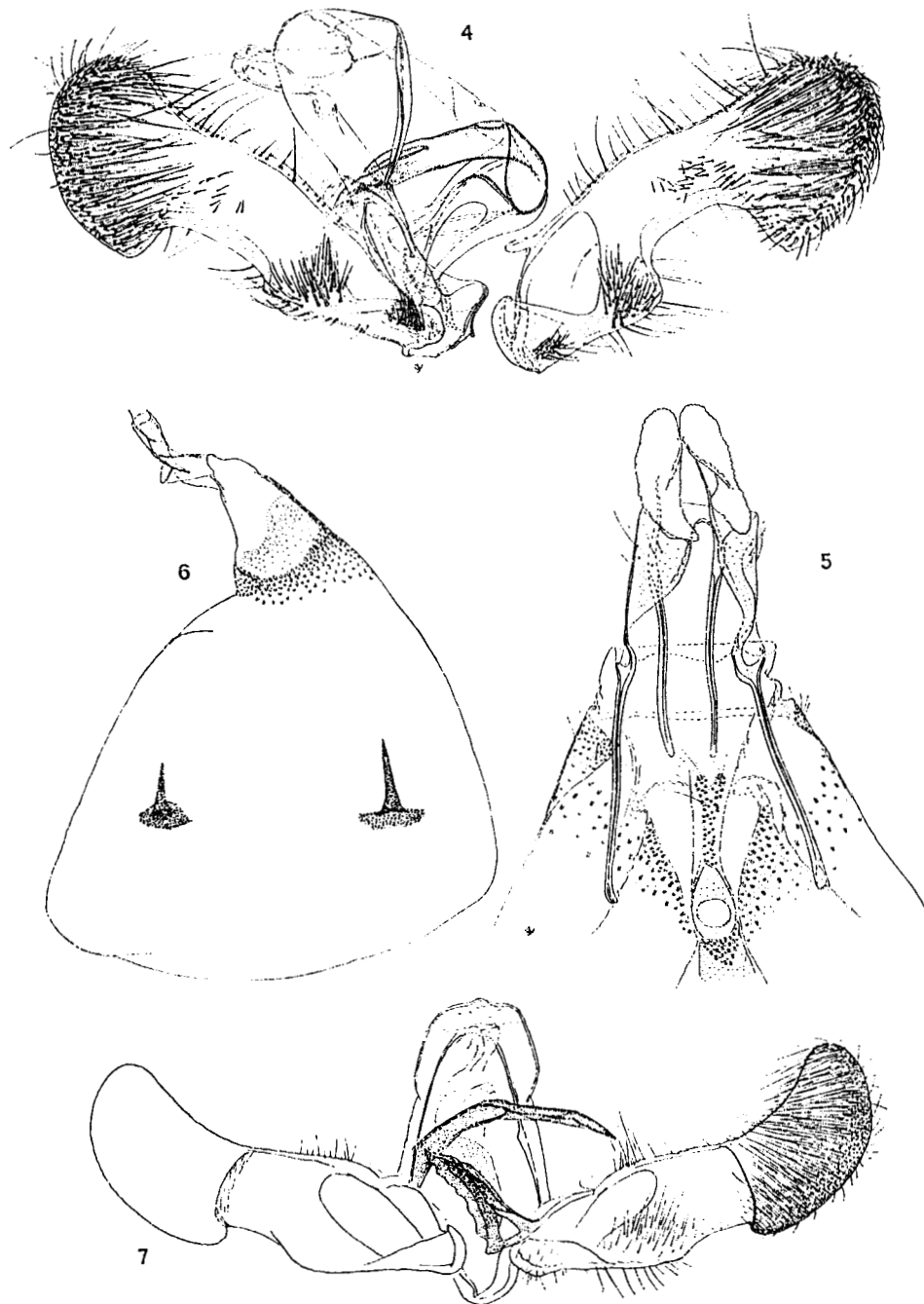
/Graecia, Lithochoron, c.l. 7.v.1958/, /Raupe in Samen von *Aubrietia* spec./ (J. Klimesch), 1 ♂, metalotype, genit. slide 8596.

As the sex partner of the female holotype has never been described, the above description and the figure may be useful. The small dark species has a characteristic white pattern, with one broader subbasal band, as depicted by Kennel. This specimen has already been tentatively named by the collector himself.

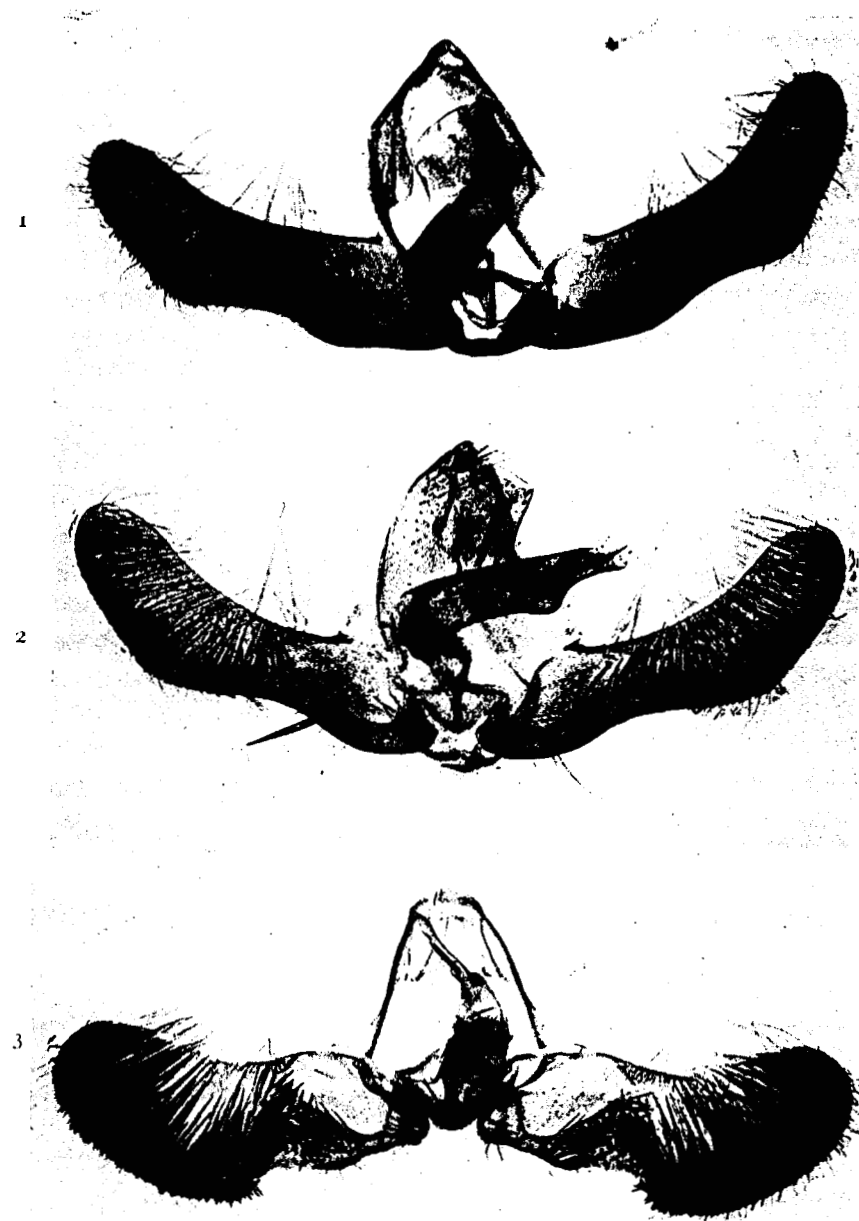
***Laspeyresia (Endopisa) elpore* spec. nov. (fig. 4)**

♂ 12 mm. Head and palpus white, median segment fuscous above, terminal segment fuscous, whitish-tipped. Thorax whitish-creamy, in middle slightly suffused with purplish-fuscous, before apex with a somewhat suffused purplish H-shaped marking. Abdomen light fuscous.

Fore wing oblong-subtriangular, distinctly dilated and moderately broad, costa gently curved throughout, apex moderately pointed, termen sinuate above, obliquely rounded below. Whitish, tinged creamy, rather densely marked with purplish-fuscous of diverse shades. Costa with some eight roundish oblique dots, alternating with more slender strigulae; a larger roundish apical dot; median and two penultimate costal dots emitting slender sinuate and very oblique light fuscous-purplish lines, reaching to middle of cell and to termen below apex, respectively, median of these three lines thickened along posterior half; a suffused and gradually dilated slender subcostal streak from beyond base, posteriorly merging into a moderate oblong suffusion below median third of costa, reaching to middle of disc; a darker, greyish suffusion rather mixed with dark purplish, along dorsum, anteriorly not quite reaching fold, posteriorly limited by fold; a darker equilateral triangular, well defined spot on fold before ocelloid spot, posterior angle extended along fold to dorsum, upper angle connected by a much suffused paler streak with apex of wing; traces of two strongly inwards-oblique somewhat irregular and not parallel transverse dark purplish lines at 1/5 and 2/5; ocelloid spot large, roundish, pale, edges silvery-white, pale grey in certain lights, three small black marks before posterior edge. Cilia (imperfect) grey, mixed with purplish-fuscous.



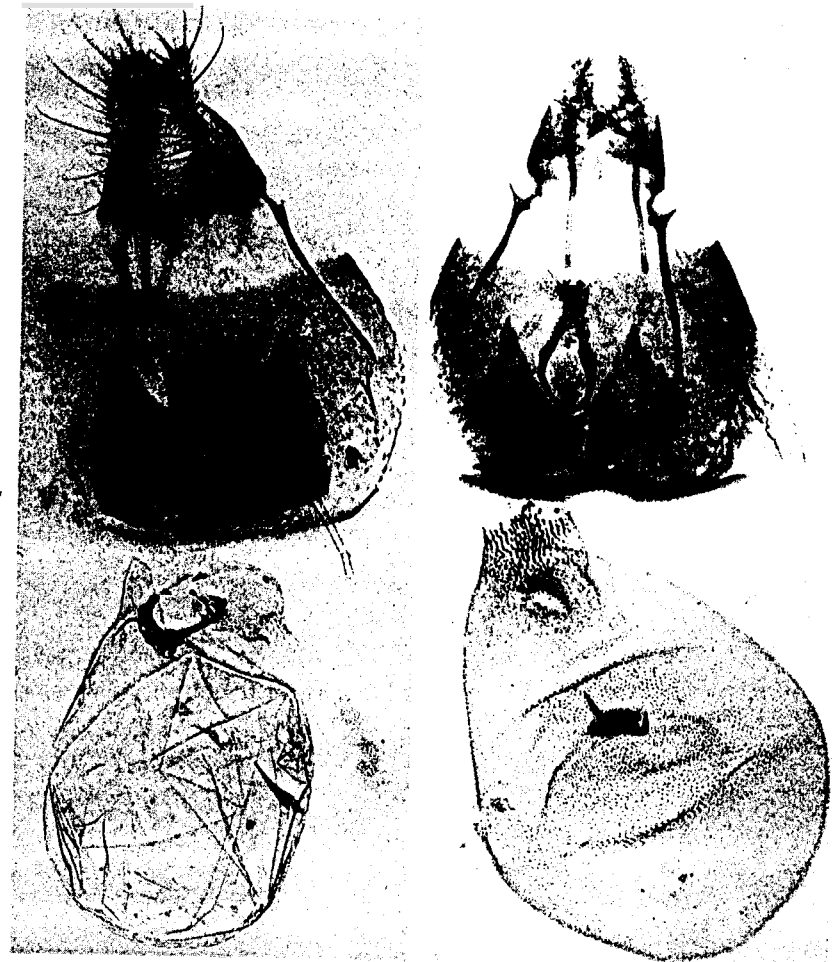
Figs. 4-7. Genitalia of Mediterranean *Laspeyresia* species. 4, *L. (Endopisa) elpore* sp. n., ♂, holotype; 5, *L. (E.) dadionopa* sp. n., ♀, paratype, genit., slide 8598; 6, the same, bursa copulatrix; 7, *L. (Kenneliola) alazon* sp. n., ♂, holotype.



Male genitalia of Laspeyresiini, holotypes. Fig. 1, *Pammene (P.) percognata* sp. n.; Fig. 2, *P. (P.) macrolepis* sp. n.; Fig. 3, *Laspeyresia (Endopisa) dadionopa* sp. n.



Genitalia of Laspeyresini. Fig. 4, *Scania macella* sp. n., holotype ♂; Fig. 5, *Laspeyresia (Indopisa) dadionopa* sp. n., allotype ♀; Fig. 6, the same, bursa copulatrix.



Female genitalia of Laspeyresini. Fig. 7, *Scania macella* sp. n., allotype; Fig. 8, *Laspeyresia (Indopisa) negatana* (Rebel), metalotype.



Fig. 9. *Pammene (P.) macrolepis* sp. n., allotype, ♀, genitalia.

Hind wing with veins 3 and 4 stalked; vein 5 subparallel; pale grey, rather densely suffused from beyond base with light tawny-bronze, this suffusion becoming darker towards margin, anteriorly fading out imperfectly. Cilia pale glossy-grey with a darker subbasal shade.

Male genitalia. Very similar to those of *L. (E.) multistriana* Chrétien, with the valva of the same characteristic shape but shorter, more clavate, excision broader and more rectangular, situated in the middle of lower edge (in *blackmorcana*, beyond middle; in *multistriana* valva decidedly longer, excision more conical or semioval). Aedeagus similar.

Canary Islands, La Palma, Los Llanos, 16-18.iv.1965 (J. Klimesch), 1 ♂, holotype, genit. slide 8458. A characteristically marked and coloured species; the markings, however, may be subject to considerable variation, as is often the case with this group of species, and therefore not all too reliable, so long no more material is available. The genitalia are decisive and distinct, showing that the species belongs to the *multistriana* group of species. Judging from the very characteristic shape of the valva I suggest a separation of the four species available: *L. (E.) blackmorcana* Walsingham, *sumptuosana* Rebel, *multistriana* Chrétien, and *elpore* sp. n., into the section *multistrianae* nov., rather than fusing them with *L. (E.) nigricana* F., as has been done until now.

L. (E.) sumptuosana Rebel is the fourth species of this compact group, with the male genitalia very similar to both those of *blackmorcana* and *elpore*, but with the excision of the ventral edge of the valva characteristically oblique, i.e., its proximal (lateral) edge being much longer than its distal lateral edge; in *elpore* this is exactly opposite, while in *blackmorcana* both lateral edges are almost of equal length; in *multistriana* this is also the case, but the whole excision is more shallow, the valva being longer and narrower than in the three other species.

***Laspeyresia (Endopisa) dadionopa* spec. nov.**

(figs. 5-6, pl. 1 figs. 3; pl. 2 figs. 5-6)

♂ 10-15.5 mm (holotype 13 mm). Head densely scaled, forehead with a projecting transverse ridge; pale tawny, face white. Antenna fuscous, finely ringed with white. Palpus subascending, sinuate, appressed to face anteriorly, reaching base of antenna, whitish, becoming pale grey posteriorly. Thorax light grey touched with pale tawny, faintly dusted with whitish (extreme tips of scales). Abdomen pale silvery-grey, glossy.

Fore wing oblong-triangular, rather long, costa curved, more so at base and at 3/4, apex rounded-prominent, termen sinuate above, gently rounded beneath, moderately oblique. Considerably variable as to size and paler or

darker general tinge. Light grey touched with pale vinaceous-tawny, on posterior half variably suffused with brighter ochreous, metallic markings pale silvery. Slightly more than basal half of wing glossy light grey-fuscous, evenly dusted with whitish (tips of scales), the effect being pale grey-tawny; this area ill-defined, extending to middle of costa and beyond middle of dorsum, in middle reaching closing vein, posterior half of wing suffused with pale yellowish-ochreous; costa suffused with darker fuscous-grey, with numerous (about 10) pairs of white marks, in basal half of wing ill-defined and more oblique, on posterior half five more distinct pairs of white thick strigulae, becoming thicker and less oblique posteriorly, second of these marks single; three sinuate, convergent pale silvery metallic lines, indistinctly alternating with brownish suffused lines, from first and third pairs, towards upper end of anterior and posterior metallic edge of ocelloid patch, respectively, but not reaching those, and three short lines from two ultimate pairs, convergent below costa and descending to a point opposite terminal concavity; ocelloid spot broad, quadrate, with three narrow black lines, lateral edges thick, conspicuous, slightly outwards-concave and vertical, a small vertical mark at the bottom of ocelloid spot; one or two irregular longitudinal larger blackish marks, preceding anterior edge of spot; apex darker, suffused with greyish. Cilia white, with a dark fuscous basal third and a dark fuscous subapical narrow band.

Hind wing pale grey dusted with light tawny, towards apex and along edge denser suffused with tawny-bronze, paler and semipellucet towards base. Cilia glossy whitish with a subbasal and a narrow and faint subapical fuscous band and a pale basal line.

♀ 10-15 mm. Similar to the male, some (smaller) specimens exactly alike, but larger specimens (allotype) with fore wing darker coloured, suffused throughout with deep brownish-fuscous, finely transversely striated (tips of scales whitish) and also sparsely dusted with white scales; brighter yellowish-ochreous posterior half of wing also suffused and rather obscured by brownish-fuscous, except on an oblong area along posterior fourth of wing below costa; pale markings more contrasting.

Male genitalia. Belonging to those of sectio *succedanae* and rather similar to those of *L. (E.) negatana* Rebel, also from the Canaries, but differing as follows. Valva with a more shallow excision, beyond this with a broadly rounded base of cucullus, that is, without a trace of a point there; disc around the excision very densely spined in a semicircle, reaching a sparse bristling along central part of costa; aedeagus with subapical process of right side extremely short.

Female genitalia. Resembling those of *L. (E.) succedana* Denis & Schif-

fermüller, but differing thus. Lamella postvaginalis with the sclerotized and bristly area extremely narrow, almost linear, dilated at top and not parted. Colliculum with unequal small sclerotization of dorsal side only. Scobinations on dilated upper part of corpus bursae large and strong, flattened.

Canary Islands, Gran Canaria Id., San Bartholomé, 17.v.1965 (J. Klimesch), 1 ♂, holotype, genit. slide 9611; the same, 8-22.v. and 25.v.1965, 1 ♂, 4 ♀, paratypes, genit. slide 9614 (J. Klimesch); the same, San Bartholomé, 1100 m (Pinker leg.), iv.1961, 1 ♂ (15 mm); the same, Ayacata, c.l. *Cylisus candicans*, 14.vi.1965 (J. Klimesch), 1 ♂, paratype. — Tenerife, Cañadas de Teide, 11.vi.1965, 1 ♀, allotype, genit. slide 9613, 1 ♀, paratype (J. Klimesch); the same, Gulmar, 6.vi.1965, 1 ♀, genit. slide 8598.

The species has been originally identified with *L. (E.) adenocarpis* Ragonot from which I am not able to separate it superficially; however, the genitalia of that species in the two sexes are quite different; especially those of the female differ widely. *L. (E.) dadionopa* actually is nearest to *L. (E.) negatana* Rebel, also from the Canaries. This species too is quite similar superficially, but close comparison of the genitalia proved distinct differences, as stated above. In my opinion they go beyond the margin of subspecific and even specific variability, and the species better be separated. I compared the genitalia with the elaborate figure of those of the holotype ♂ of *negatana* by Danilevski & Kuznetsov.

Laspeyresia (Endopisa) negatana (Rebel) (pl. 3 fig. 8)

Phthoroblastis salvana Rebel, 1894 (nec Staudinger): 88 (erroneous identification).

Grapholitha negatana Rebel, 1896: 121, pl. 3 fig. 8 (♂). — Obratsov, 1959: 185.

Laspeyresia (Endopisa) negatana; Danilevski & Kuznetsov, 1968: 512, fig. 373 (genit. ♂).

Distribution. Canary Islands, Tenerife, Puerto Orotava.

Canary Islands, Canaria, Ayacata, c.l. *Cylisus candicans*, 14.vi.1965, ♂ — Canaria, San Bartholomé, 17.v.1965, 1 ♂, 8-22.v.1966, 2 ♂. — Tenerife, Cañadas de Teide, 11.vi.1965, 1 ♂.

Metallotype, ♀, 11 mm. Head and thorax grey with a faint bronze gloss, densely dusted with black. Palpus light grey, top of median segment suffused with dark grey, terminal segment blackish-grey. Abdomen dark grey.

Fore wing oblong-truncate, rather narrow, costa curved at base, straight posteriorly, apex rather pointed, termen straight, little oblique above, rounded below. Deep purplish-fuscous, anterior half very densely strewn with whitish roundish dots (posterior halves of scales) with pale greenish tinge, posterior half of wing with close transverse pale ochreous striation (tips of scales); costa along anterior half with six oblique wedge-shaped black transverse marks, along posterior half costa with three black subtriangular little oblique

spots, followed by three slender, vertical wedge-shaped black marks, all alternating with white marks, broader anteriorly, slender between posterior black spots; a faint dorsal patch, formed of denser white-greenish dusting, faintly dark-parted, on middle of dorsum, gently curved outwards, reaching just above middle of wing breadth; basal patch ill-defined, hardly to $1/4$, formed of paler grey dusting extending over basal $1/4$ of costa, on costa followed by two black wedge-shaped spots, alternating with two whitish oblique streaks with silvery gloss; posterior half of costa blackish, with five rather broad pairs of white marks, becoming less oblique; posterior pair broadly parted; metallic markings on posterior half of wing thickened, brilliant pinkish-violet: an oblique straight, clavate streak from first and third pair of costal marks, respectively, reaching $1/3$ across wing, a longer streak from the ultimate pair, parallel to termen, thickish below and forming posterior edge of ocelloid spot, and anterior edge of spot; this very thick, almost suboval, preceded by a few jet-black scales; ocelloid spot broad, its lower half containing a thick and a thin jet-black horizontal line and a third thin line with anterior half obliterate; a black terminal band in apex along termen and in tornus, sparsely dusted with pale ochreous. Cilia fuscous, with a pale fuscous basal half.

Hind wing blackish-fuscous, becoming paler on anterior half, more than basal half of costa and cell almost entirely whitish. Cilia whitish-fuscous, with a dark fuscous basal third and a fine pale basal line, and a suffused faint fuscous band at posterior $1/3$.

Female genitalia. Seventh and eighth segments darkly sclerotized. Anapophysis dark, with a triangularly dilated concave top, postapophysis not darkened. Ostium erect-oval, with a distinct edge becoming thicker upwards, lamella postvaginalis rather small, clavate, top not parted. Colliculum sclerotized at the sides, right side longer. Corpus bursae with neck rather broadly spined.

Canary Islands, Tenerife, El Tanque, c.l. *Ulex europaea*, 25.i.1974 (J. Klimesch leg.), 1 ♀, metalotype, genit. slide 9441.

Laspeyresia (Endopisa) sumptuosana Rebel (fig. 2)

Laspeyresia sumptuosana Rebel, 1928, Verh. zool.-bot. Ges. Wien 78: 83.

I owe to the kindness of Dr. F. Kasy of the Vienna Museum the opportunity to compare and figure here the genitalia of the holotype of *L. (E.) sumptuosana* Rebel. The slide is labelled thus: *Laspeyresia sumptuosana* Rbl., Tanager, iii.1910, Type/. /♂, no. V.12, Mus. Vind. 2496/. (Fig. 2).

Holotype (monotype), ♂: tips of forewings intact but downcurved, therefore fore-shortened in photograph (as Danilevski & Kuznetsov thought correctly)!

Ground colour remains only in posterior half of cell: pale ochreous; elsewhere suffused throughout with brighter dull ochreous and partly dusted with light fuscous-grey. Costa anteriorly dark fuscous-grey, gradually turning ochreous posteriorly, throughout with numerous ochreous-whitish dentoid marks, narrowly separated by ground colour, as mentioned above (from dark to light); posterior half of costa with narrow silvery metallic lines, first from about median pair of whitish marks to upper end of anterior edge of ocelloid spot; second line from third pair of marks (counted from middle of costa), running to opposite $1/3$ of termen, there converging at a rather acute angle with line from ultimate pair of costal marks; these metallic silvery lines also tinged golden; as are conspicuous edges of ocelloid spot, anterior very broad, posterior narrower, broken below its middle, lower part shifted slightly basad; with some 3-4 black lines; ocelloid spot filled out with ground colour; anterior edge of patch preceded by an inwards-angulate black transverse line, the length of that edge and by a series of black dots; some black dots along termen opposite upper part of posterior edge of ocelloid patch; a small, almost vertical black mark in centre of disc just before middle; basal third of wing on lower half irregularly spotted with dark fuscous suffusion, indicating basal patch and forming an almost continuous subbasal transverse band.

Hind wing creamy touched with fuscous, with a strong golden gloss, cilia white.

It seems probable that the species is the same as *L. (E.) blackmoreana* Walsingham.

Laspeyresia (Kenneliola) alazon spec. nov. (fig. 7)

♂ 20 mm. Head white, vertex touched with pale ochreous. Palpus whitish, posterior half gradually becoming pale tawny. Thorax pale grey with a golden gloss. Abdomen pale ochreous-grey, venter white.

Fore wing long and rather narrow, dilated, costa almost straight throughout, apex rounded, gently produced, termen very gently sinuate, moderately oblique. Pale grey, becoming slightly darker towards costa, faintly marbled throughout with deeper pale tawny, throughout with a fine transverse striation (pale apical edges and basal halves of scales); costa before apex with a semicircular darker fuscous costal spot; hardly discernible whitish suffused pairs of strigulae along posterior half of costa, giving rise to four very faint equidistant slightly outwards-convex light leaden transverse fasciae, three before, one beyond dark costal mark; a suffused white streak just above posterior half of median branch, beyond cell merging into an irregular oblong white patch, limiting pale costal streaks and crowning ocelloid spot; this

spot pale grey-tawny, circular, edge leaden-whitish, little contrasting; a few scattered minute black scales, irregular in right, in a subterminal series, in left wing; traces of three irregular pale grey-tawny strigulae traversing white spot between pale leaden costal fasciae; a faint spot of darker grey suffusion on lower angle of cell; veins beyond cell more or less darker grey. Cilia pale grey, basal third dusted with darker grey, a grey apical streak, extreme tips white.

Hind wing with veins 3 and 4 very short-stalked, vein 5 slightly approximated to 4 at base, 6 and 7 closely approximated towards base; pale grey with very fine fuscous dusting along posterior 2/3, becoming denser towards edge. Cilia white, with a light tawny-fuscous subbasal line and a whitish-golden basal line.

Male genitalia. Tegumen on upper half distinctly dilated, appearing semi-circular. Valva rather narrow and sinuate, sacculus with an apical oval darkly tinged tumescence with fine bristles; constricted area not bristled, excision shallow; a distinct transverse and gently outwards-convex high rib, terminating to costa, and separating cucullus; this with a small but well-defined rounded ventral prominence, distinctly upcurved. Aedeagus about 1/2 entire valva, slender, with an acute point, moderately curved throughout, slightly dilated in middle. Cornuti, a large central straight spine and a patch of fine aciculae posteriorly.

Canary Islands, Gran Canaria, San Bartholomé, 8-22.vi.1965 (J. Klimesch), 1 ♂, holotype, genit. slide 8607.

A surprising species, superficially and by its size resembling more a *Crambus* than a *Laspeyresia*! The hind wing neuration is slightly deviating, but the male genitalia are very distinct and decisive. Perhaps nearest to *L. (K.) astragalana* Staudinger.

REFERENCES

- DANIILEVSKI, A. S., & V. J. KUZNETSOV, 1968. — Fauna of the USSR Lepidoptera, 5(1), Tortricidae: Laspeyresiini: 1-635, figs. 1-469. — Nauka, Leningrad. [Fauna USSR. Nasekomye cheshuekrylye 5(1) Listovertki (Tortricidae) Tribus Plodozhorki (Laspeyresiini)].
- HEYLAERTS, F., 1874. — Eene nieuwe, bij Breda gevonden *Grapholitha*-soort, *Grapholitha conicolana*, Heyl. — Tijdschr. Ent., 17: 212-215.
- KENNEL, J., 1908-1921. — Die palaearktischen Tortriciden. — Zoologica, 21 (54) [1921: 547-742].
- OBRAZTSOV, N. S., 1959. — Die Gattungen der Palaearktischen Tortricidae. II. Die Unterfamilie Olethreutinae. 2. Teil. — Tijdschr. Ent., 102: 175-215, figs. 25-63, pls. 23-26.
- REBEL, H., in H. Rebel & D. Rogenhofer, 1894. — Zur Lepidopterenfauna der Canaren. — Ann. Naturhist. Hofmus. Wien, 9: 1-96.

REBEL, H., 1896. — Dritter Beitrag zur Lepidopterenfauna der Canaren. — Ann. Naturhist. Hofmus. Wien, 11: 102-147.

STAUDINGER, O., 1871 (1870). — Beitrag zur Lepidopterenfauna Griechenlands. — Horae Soc. ent. Ross., 7: 3-304.

ZETTERSTEDT, J. W., 1840. — Insecta lapponica descripta: 1-1140. — Lipsiae.