

(R) ENT

Vieraea 20. 21-26
Diciembre 1991

ISSN 0210-945X

Three new species of Coleoptera from the Canary Islands

G. GILLERFORS

Maskrossigen, 23. 43200 Varberg, Sweden

(Aceptado noviembre 1989)

GILLERFORS, G. 1991. Tres nuevas especies de Coleoptera de las Islas Canarias. *VIEREA* 20: 21-26

RESUMEN. Se describen tres especies nuevas de coleópteros de Canarias: *Tarphius barbara* n.sp. de Anaga, Tenerife, y *T. huggerti* n.sp. y *Lycoperdina canariensis* n.sp. de El Palmital, Gran Canaria.

Palabras clave: Coleópteros, Colydiidae, Endomychidae, especies nuevas, Islas Canarias.

ABSTRACT. Three species of coleoptera from the Canary Islands are described: *Tarphius barbara* n.sp. from Anaga, Tenerife, *T. huggerti* n. sp. from El Palmital, Gran Canaria and *Lycoperdina canariensis* n.sp. from El Palmital, Gran Canaria.

Key words: Coleoptera, Colydiidae, Endomychidae, new species, Canary Islands.

INTRODUCTION

The two new species of *Tarphius* prove that the *Tarphius* fauna has not yet been completely explored in the Canary Islands. WOLLASTON (1860, 1864, 1865) described 13 species from there and since then 9 further species have been found, above all by FRANZ (1967, 1984), also by DAJOZ (1977) and by me (GILLERFORS, 1986). FRANZ has divided the genus in three subgenera, *Glabrotarphius*, *Caudatotarphius* and *Atlantotarphius* (1967) according to external characters, mainly the development of the nodules on the elytra. It can be doubted if this division is correct as the occurrence of nodules varies much from very strong as in *humerosus* Wollaston to almost absent as in these two new species, also in an undescribed species from Gomern and also in *piniphilus* Franz.

Lycoperdina canariensis n.sp. is rather similar to the other species found in the Canary Islands. The dividing characters seem to be constant (although the collected material is small) so it may be justified to treat them as valid species (see OROMI & GARCIA, 1987).

RESULTS

Tayhius barbarae n.sp. (Figs. 1, 3)

Type material:

Holotype, Canary Islands, Tenerife, Anaga, 2.VIII. 1988, G. Gillerfors leg., in coll. Dept. of Zoology, Univ. La Laguna, Tenerife.

Etymology

Named after my friend Barbro Silfverberg.

Diagnosis

This species is rather similar to *T. congestus* Wollaston but is distinguished from that species by its slender body and almost complete lack of fovea on elytra and stronger granules. The structure of male genitalia is quite different (figs. 3, 4).

Description

Pronotum and elytra unicolourous pitchy, head pitchy-brown, mouthparts lighter, appendages light brown. Body length 3.2 mm, width 1.8 mm. Index l/w 1.77.

Head. Greatest width just before eyes. Sides anteriorly strongly converging, front margin almost straight. Sides posteriorly constricted. Eyes small, only faintly visible from above. Surface with densely placed small but distinct granules with fine rufescent hairs bent forward. Antennae rather short, segments 2 and 3 of equal length, 4 shorter than 3 and subequal with 5.

Pronotum. 1.6 times wider than long. Greatest width behind middle, anteriorly rather strongly converging, sides posteriorly subparallel. Front angles rather strongly protruding, hind margin somewhat bisinuate, curved rearwards in middle. Convex part of disk longitudinally impressed in middle with smooth area. Granules well developed, each with a short decumbent obtuse rufescent seta.

Elytra somewhat longer than broad (index length/width 1.10). Humeral angles prominent, somewhat protruding, sides subparallel. Upper surface with well marked and elevated granules in indistinct rows with short semi-decumbent obtuse rufescent setae, at base also with very minute hairs. Nodules faintly developed; in 3rd interval a small ridge-like at anterior margin and a short ridge-like apical, the rest very faint. In middle with a very faint impression. Sides very steep.

Bionomics: Collected by sifting leaf-litter and decaying branches in laurel forest.

Tarphius huggerti n.sp. (Figs. 2, 5)

Type material

Holotype, Canary Islands, Gran Canaria, Bco. de la Mina, 19.XI.1988, G. Gillerfors leg., in coll. Dept. of Zoology, Univ. La Laguna, Tenerife. Paratypes: Same data as holotype (3), G. Gillerfors leg., in coll. G. Gillerfors, Varberg, Sweden.

Etymology

Named after my friend Lars Huggert who took part in the excursion.

Diagnosis

Characterised by the rather broad and short body, evenly rounded sides of pronotum and very faintly developed nodules on the elytra and the structure of the acdeapus (fig. 5).

Description

Pitchy-brown, sides of pronotum and patches on clytra more or less rufescent. Appendages rufous. Body length 2.9 - 3.3 mm, width 1.8 - 2.2 mm. Index l/w about 1.63.

Hcad. Sides before eyes converging, front margin faintly rounded. Surface faintly impressed laterally. Granules small and distinct with forward bent fine hairs. Eyes small, not protruding. Antennae short, segments 2 and 3 subequal in length, 4 and 5 subequal and shorter than 3.

Pronotum. Index width/length 1.60. Sides rather strongly rounded, greatest width in middle. Middle portion of disk strongly convex with a longitudinal smooth furrow. Explanate sides rather broad with outer margin somewhat raised. Granules small and distinct with short decumbent obtuse light setae. Elytra about as long as broad. Sides subparallel, anteriorly somewhat converging. Humeral angles not protruding. Declivity of convex portion strongly steep both at sides and at apex. Granules small but distinct in more or less irregular rows, each with erect fairly obtuse yellow-reddish setae surrounded by very minute hairs. Nodules weakly developed, only those posteriorly in 3rd interval more conspicuous. Posteriorly in 4th and 5th intervals with smooth areas.

Bionomics

Collected near a small brook in a ravine by sifting litter and dead branches under bushes.

Lycoperdina canariensis n. sp. (Figs. 6, 7)

Type material

Holotype, Canary Islands, Gran Canaria, El Palmital, 14.XI.1988, G. Gillerfors leg., in coll. Dept. of Zoology, Univ. La Laguna, Tenerife. Paratypes: same locality as holotype but 18.XI.1988 (1), G. Gillerfors leg., in coll. G. Gillerfors, Varberg, Sweden; same data (1), L. Huggert leg., in coll. Zool. Museum, Univ. of Lund, Sweden.

Diagnosis

Distinguished from the three other known Canarian species by lacking microreticulation on pronotum and elytra and entirely yellow-red antennae and legs and somewhat different structure of aedeagus (fig. 7).

Description

Head and pronotum brown - dark-brown, elytra black with shoulders and apex rufescent. Apiciidages entirely yellow-red. Body length 3.6 - 5.2 mm, width 1.8 - 2.4 mm. Index l/w 2.00 - 2.17.

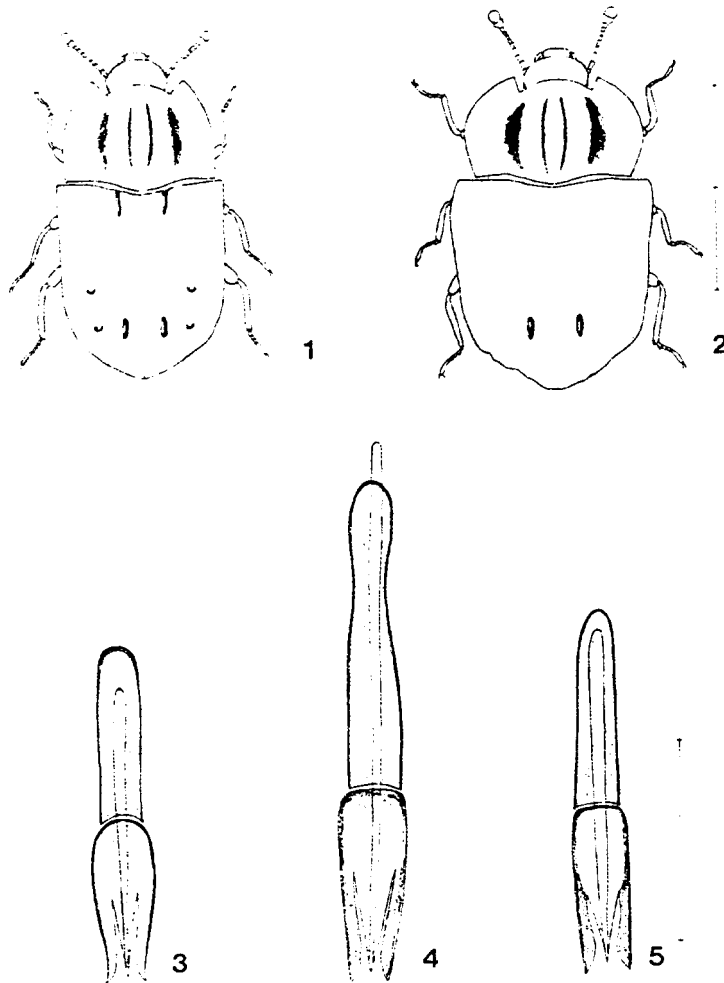
Head. Upper surface with tough and strong punctation and faintly microreticulated. Antennae: segments 1 and 3 subequal in length, and 1.5 times longer than 2; 2 and 4 subequal.

Pronotum. Cordiform (fig. 6). Sides anteriorly moderately rounded with rather sharp front angles, sides posteriorly almost parallel. The two posterior sharp longitudinal impressions reaching to near middle. Upper surface almost glabrous, very faintly and sparsely punctured with tiny hairs, almost invisible and without microreticulation.

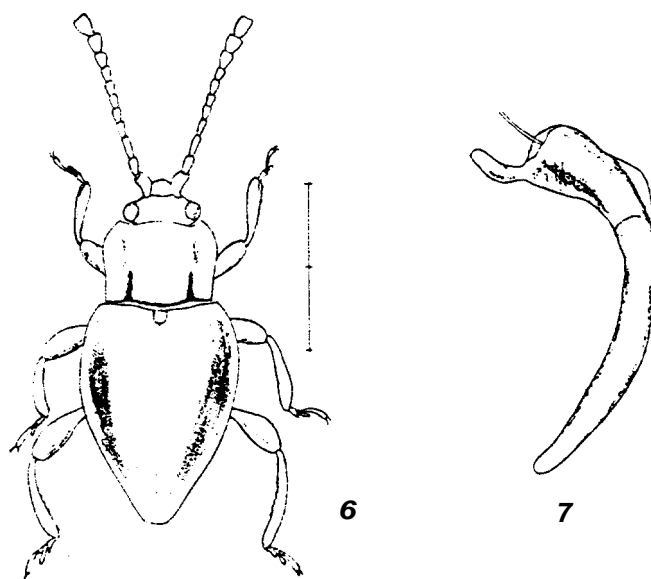
Elytra longer than broad, index length/width 1.33 - 1.37. Greatest width in anterior third. Sides anteriorly rounded to the obtuse humeral angles, posteriorly tapering to a tail-like apex. Upper surface without microreticulation, with rather dense, fine but conspicuous punctation and with decumbent hairs.

Bionomics

Collected by sifting debris in laurel forest.



RCS. 1-5. *Tarphius* spp. 1-2: habitus. 1: *T. barbarae* n. sp. 2: *T. huggerti* n. sp. 3-5: aedeagus. 3: *T. barbarae* n. sp. 4: *T. congestus* Wollaston. 5: *T. huggerti* n. sp. Scale bar: Figs. 1-2: 2mm, fig. 3-5: 0.5 mm .



FIGS. 6-7: *Lycoperdina canariensis* n. sp. 6: habitus. 7: aedeagus. Scale bar: Fig. 6: 2 mm, fig. 7: 0.5 mm.

REFERENCES

- DAJOZ, R. 1977. *Coléoptères Colydiidae et Anommidae Paléarctiques. Faune de l'Europe et du Bassin Méditerranéen*. 8. Ed. Masson, Paris, pp. 1-275.
- FRANZ, H. 1967. Revision der *Tarphius*-Arten Europas, Nordwestafrikas und der Kanarischen Inseln (Coleopt., Colydiidae). *Eos*, 43: 62-81.
- FRANZ, H. 1979. Neue Endomychiden (Coloptera) von den Kanarischen Inseln und aus Marokko. *Vieraea*, 8 (1978): 87-91.
- FRANZ, H. 1984. Weitere neue Coleopterenarten von den Kanarischen Inseln (Coleopt. Colydiidae). *Vieraea*, 13 (1983): 75-81.
- GILLERFORS, G. 1986. Two new species of the genus *Tarphius* from La Gomera (Canary Islands) and designation of lectotype of *Tarphius humerosus* Wollaston and *T. gomerae* Franz (Coloptera, Colydiidae). *Vieraea*, 16: 3-10.
- OROMI, P. & R. GARCIA. 1987. Sobre una nueva especie de *Lycoperdina* de las Islas Canarias (Coloptera, Endomychidae). *Vieraea*, 17: 87-91.
- WOLLASTON, T.V. 1860-1863. Notes on *Tarphius* with description of an allied genus. *Journ. Ent.*, 1: 371-387.
- WOLLASTON, T.V. 1864. *Catalogue of the coleopterous insects of the Canaries*. Taylor & Francis, London. 648 pp.
- WOLLASTON, T.V. 1865. *Coleoptera Atlantidum*. J. van Voorst, Looidon. 526 pp. App 140 pp.